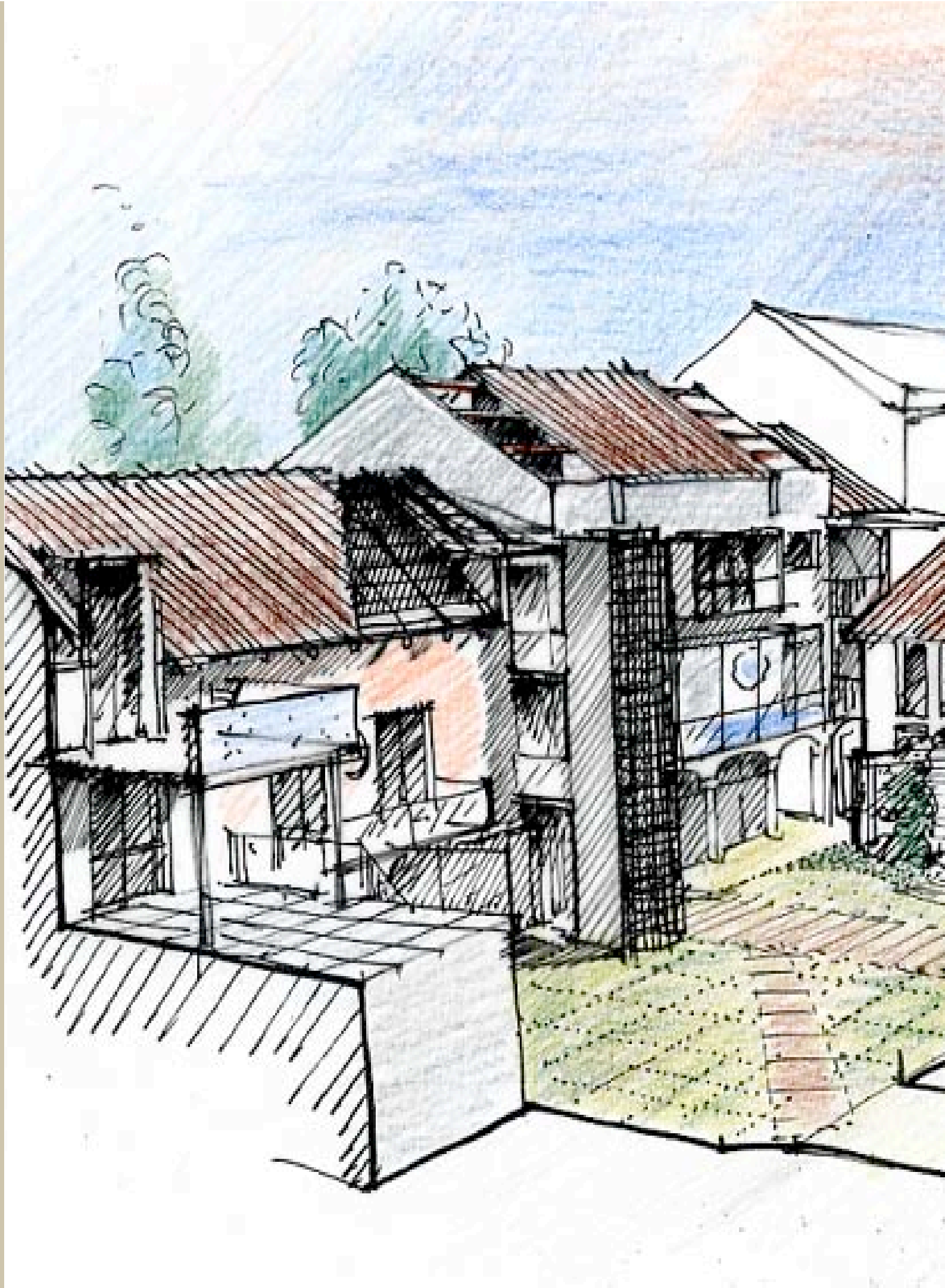
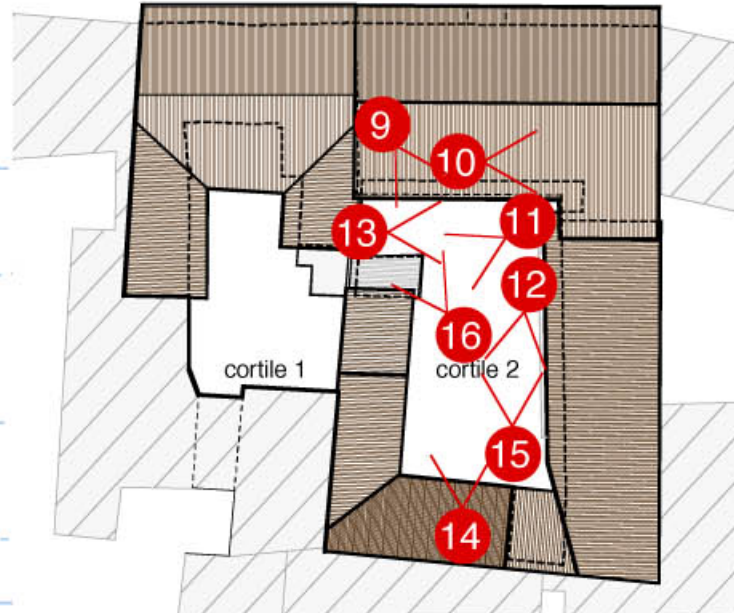
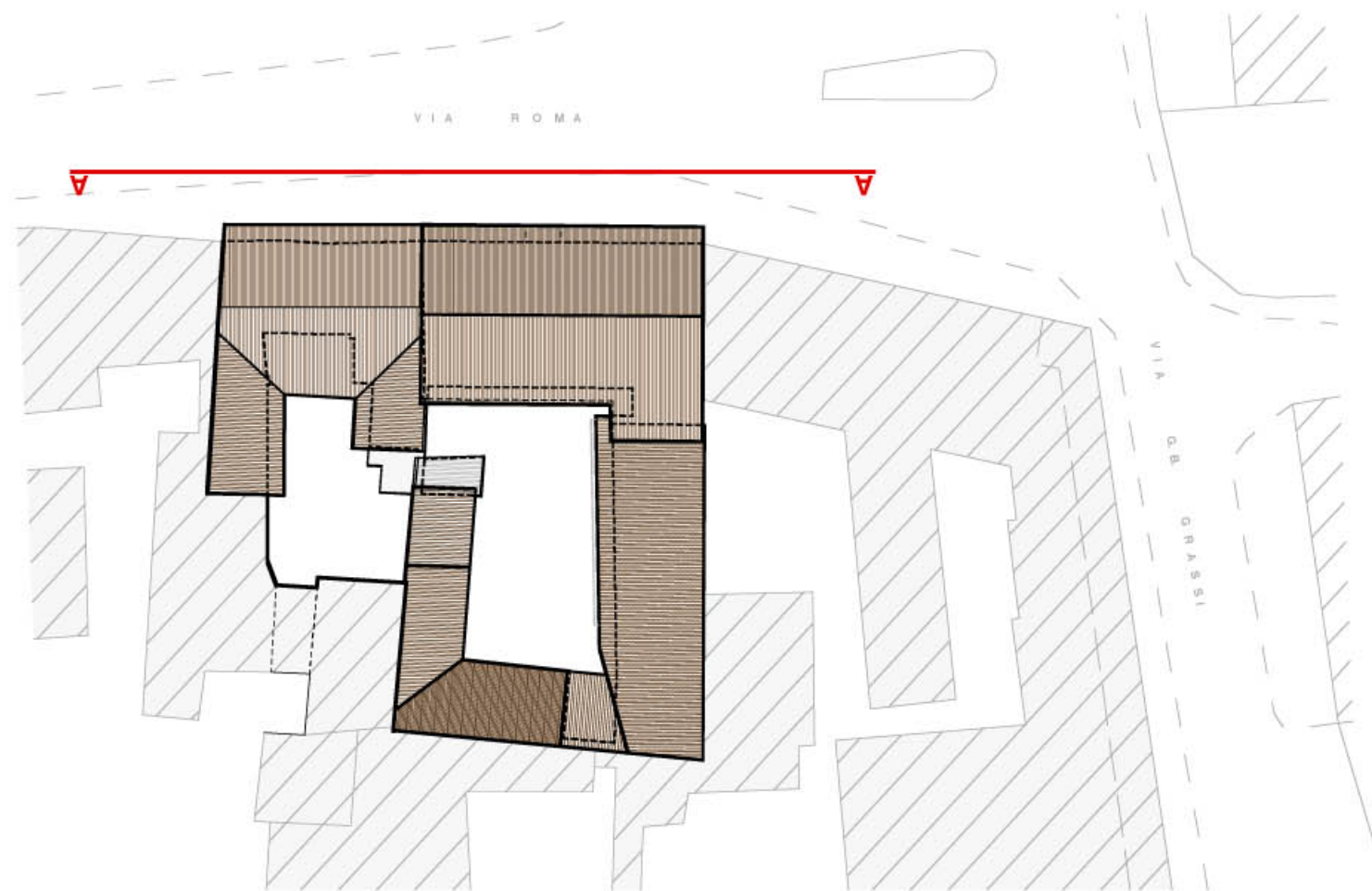


boga & stocco
Building in rovellasca



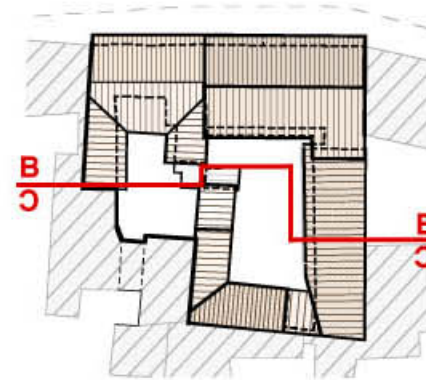




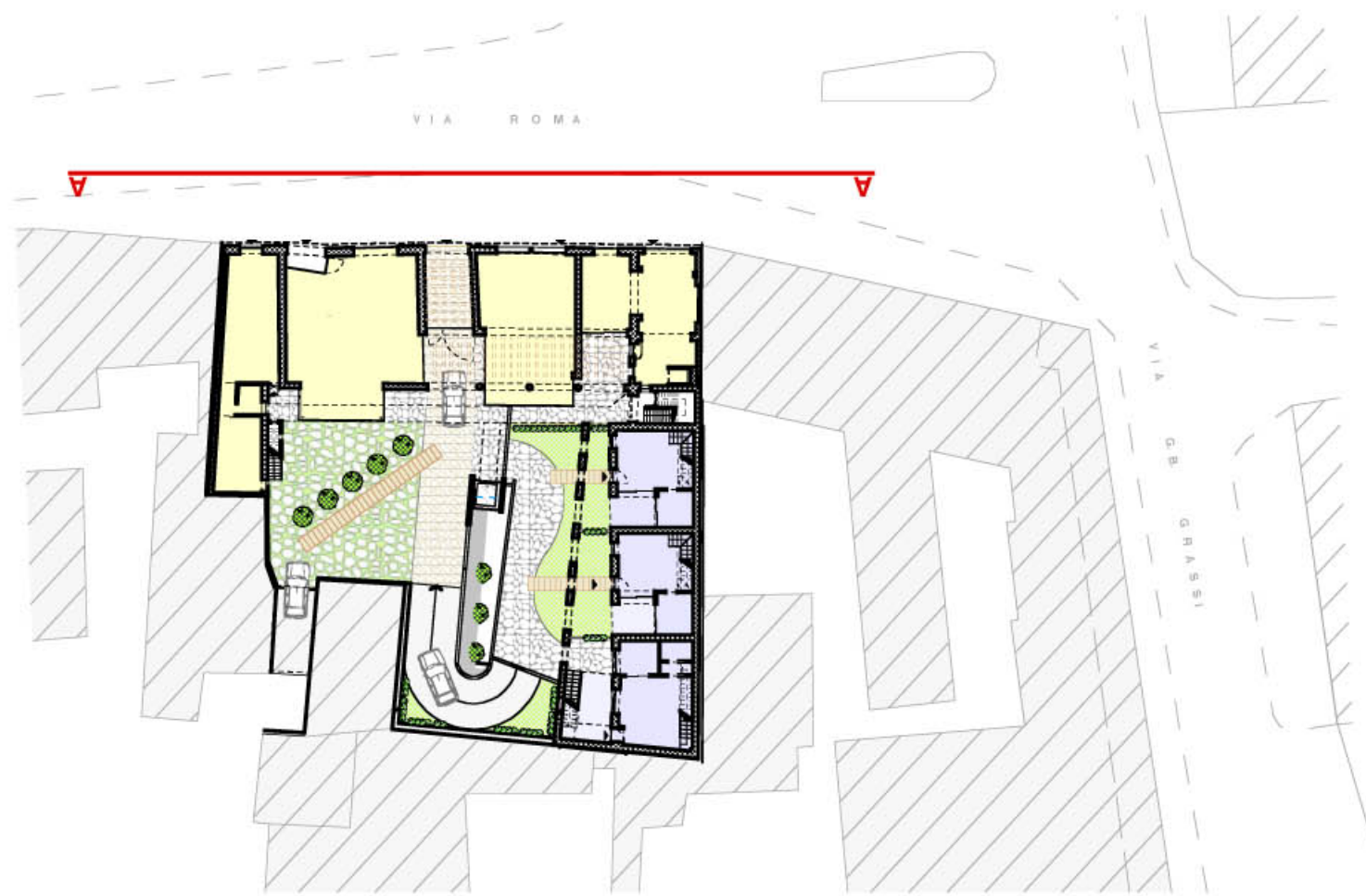
SEZIONE AA - prospetto nord - Via Roma



SEZIONE BB - prospetto sud - cortile interno



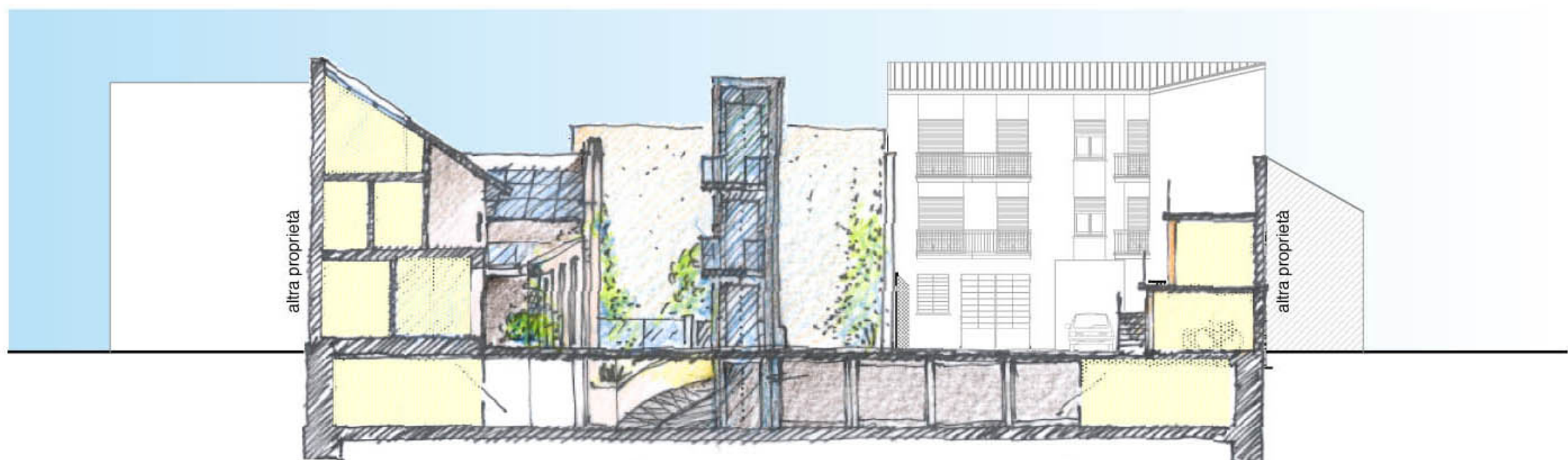
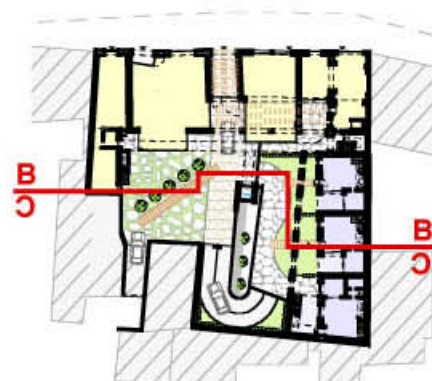
SEZIONE CC - prospetto nord - cortile interno



SEZIONE AA - prospetto nord - Via Roma



SEZIONE BB - prospetto sud - cortile interno



SEZIONE CC - prospetto nord - cortile interno

V I A R O M A

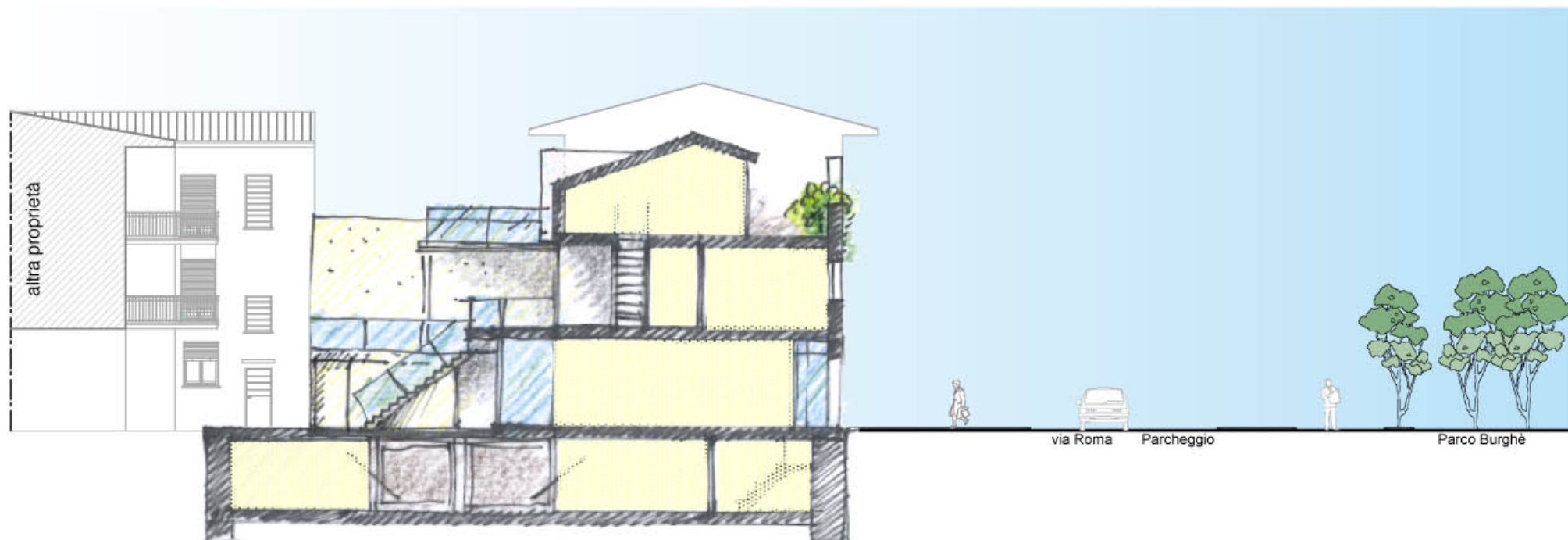
B corpo piani 2

A corpo piani 3

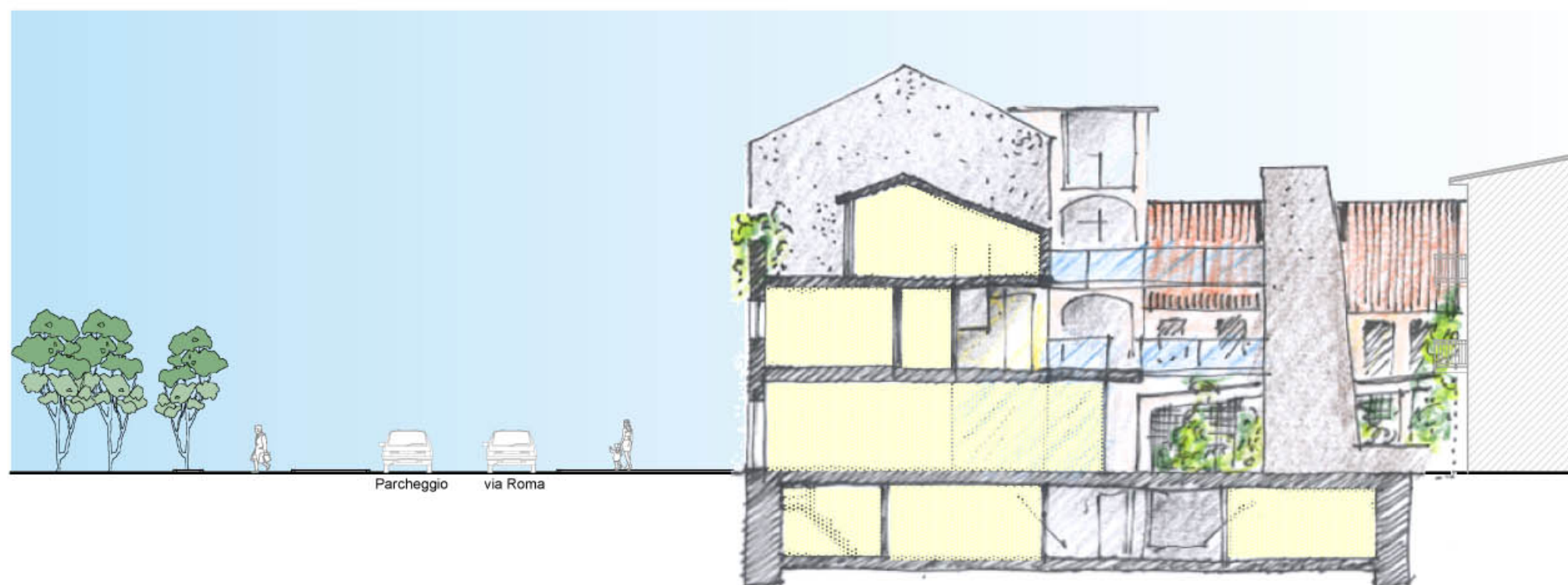
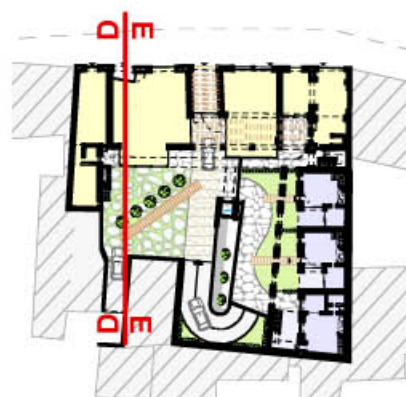
C corpo piani 2

-  unità commerciali n°4
-  unità residenziali n°3
-  deposito cicli n°1

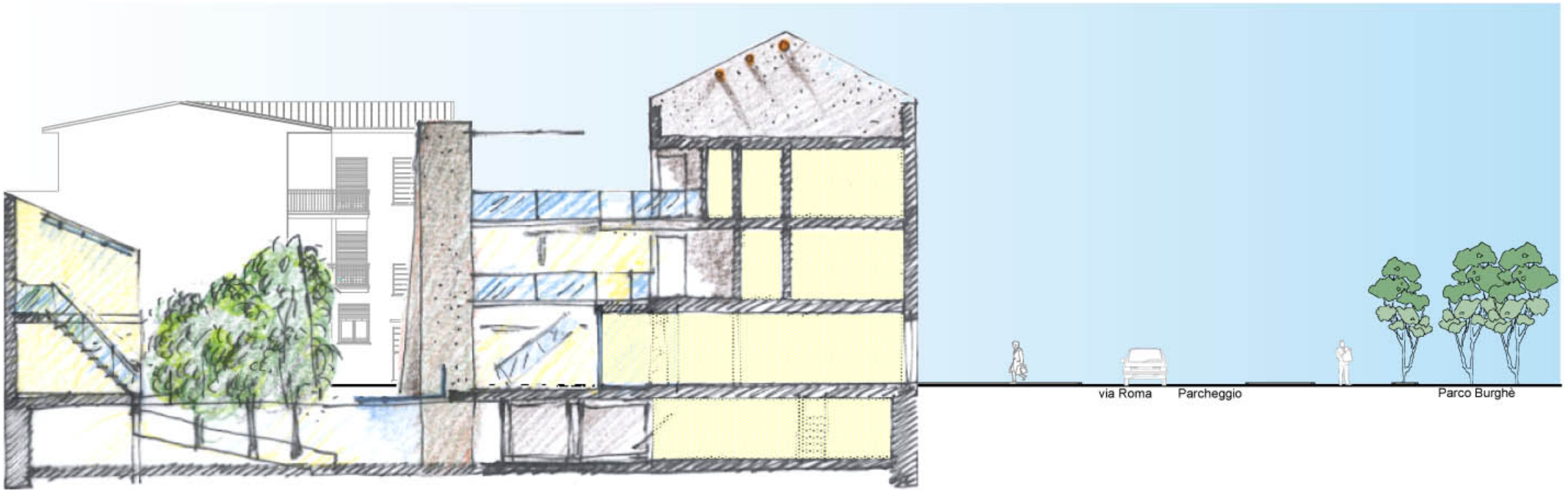




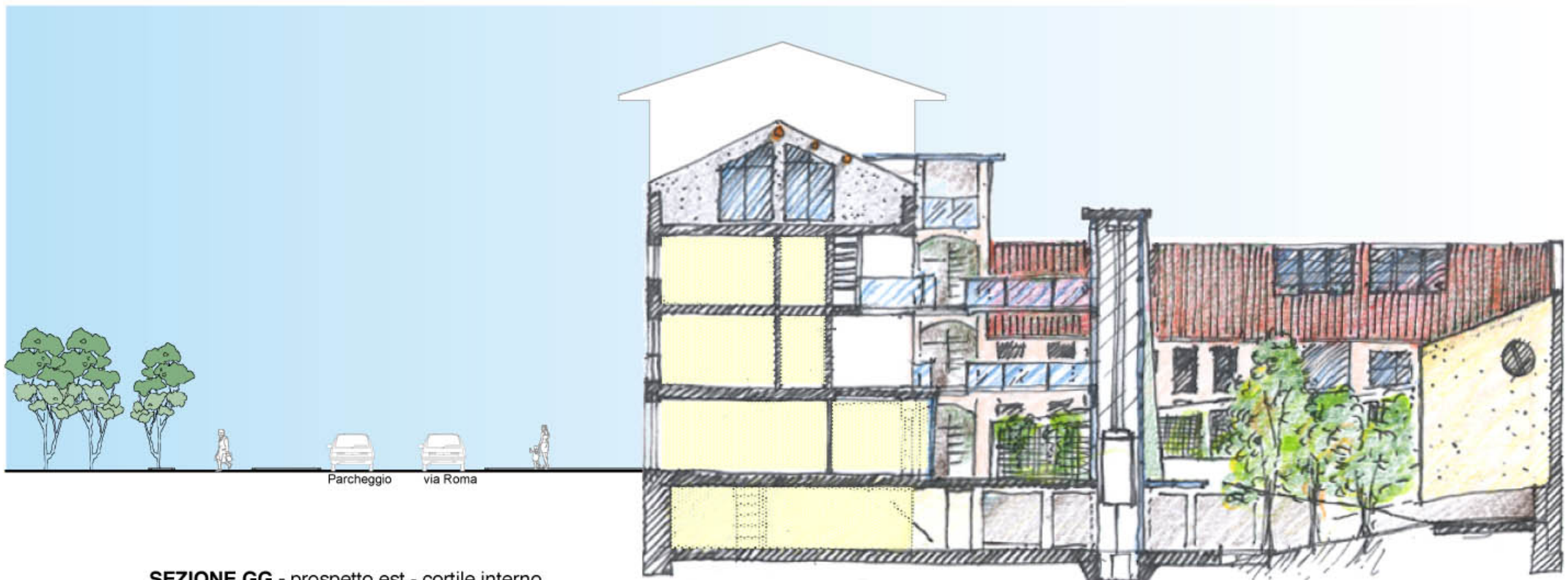
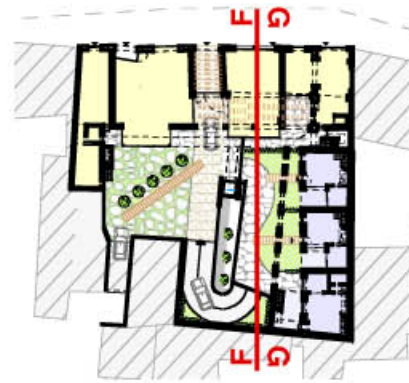
SEZIONE DD - prospetto ovest- cortile interno



SEZIONE EE - prospetto est- cortile interno



SEZIONE FF - prospetto ovest - cortile interno



SEZIONE GG - prospetto est - cortile interno

